

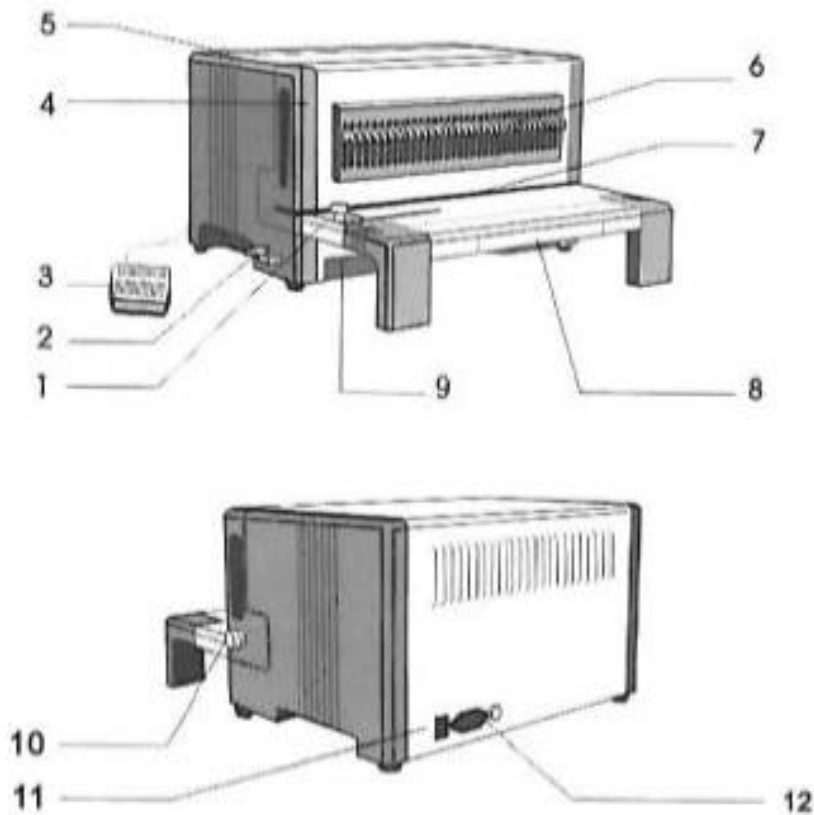
Instruction Manual

Electric – multifunctional – punching machine

D600



1. Description



- | | |
|-------------------------|--------------------------|
| 1. Paper fixer | 7. Paper entry |
| 2. Lock handle | 8. Paper support |
| 3. Foot pedal | 9. Waste drawer |
| 4. Punching tool | 10. Depth margin control |
| 5. Operating lamp | 11. Power switch |
| 6. Die disengaging pins | 12. Fuse |

2. Delivery contents

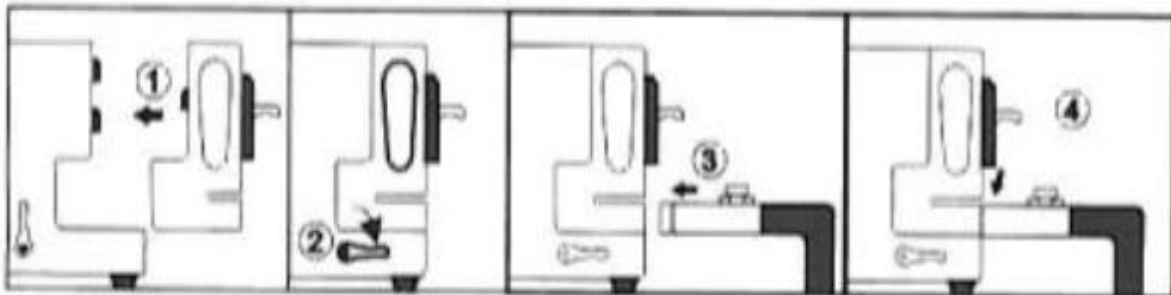
- Punching machine D600 – 1 piece (Punching tools are available as accessories)
- Fuse – 1 piece
- Power cable – 1 piece
- Instruction manual – 1 piece

3. Features

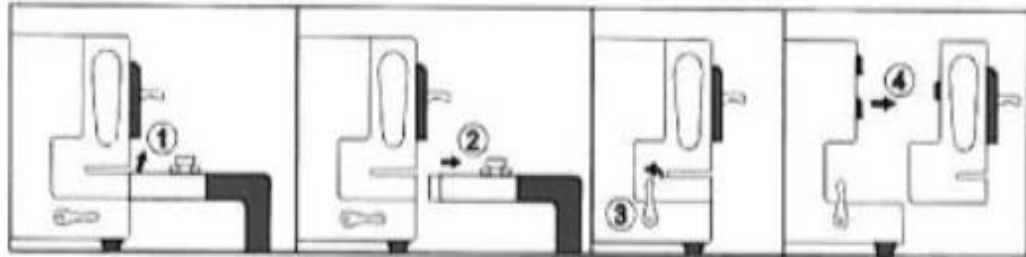
1. Different punching tools allow a variety of punching possibilities as well as the subsequent binding possibility.
 2. Punching tools for the following binding methods:
 - 21 holes plastic bindings
 - 34 round / square wire bindings 3:1 pitch
 - 23 round / square wire bindings 2:1 pitch
 - 49 round coil binding, 6mm pitch
 - 59 round coil binding, 6mm pitch
- The number of holes in the list above refers to the long side of an A4 sheet format.

4. Set-up and insertion of tool

- The machine has a heavy-duty design, so make sure the working table is sturdy and able to hold heavy loads.
- If no punching tool is inserted, follow the instructions:



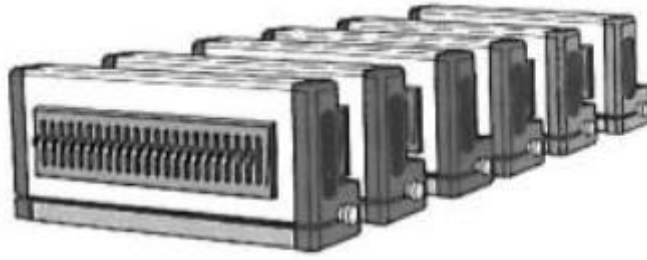
1. Insert the required tool.
 2. Close the lock handle for the tool.
 3. Connect the paper support to the machine.
 4. Connect the paper support to the machine as shown in the picture.
- When moving the machine, emptying the waste drawer or changing the tool, always remove the paper support first.



1. Lift the paper support at the front corner.
2. Remove the paper support.
3. Open the lock handle for the tool.
4. Remove the tool.

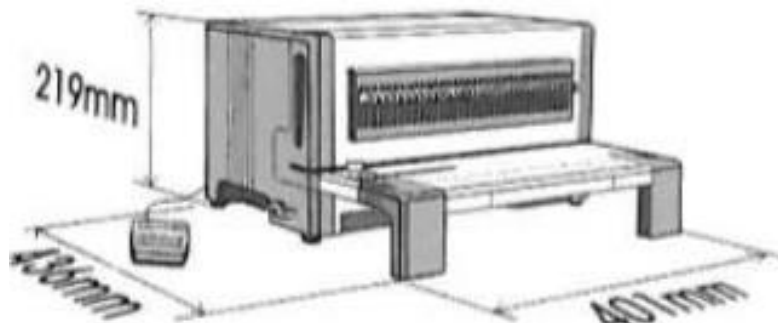
5. Use

- We offer 9 different punching tools as accessories.
- If the tool no longer punches correctly, contact us.



Tool	Description	Punch holes	Pitch	Dimensions of hole
D600W-A21	Punch for 21 rings	21	21 rings	3x8mm
D600W-A23	Punch for 23 rings	23	2:1	5x5mm
D600W-A23R	Punch for 23 rings, round	23	2:1	5mm
D600W-A34	Punch for 34 rings	34	3:1	4x4mm
D600W-A34M	Punch for 34 rings, with thumb slot	34	3:1	4x4mm
D600W-A34R	Punch for 34 rings, round	34	3:1	4mm
D600W-A34Y	Punch for 34 rings, round with thumb slot	34	3:1	4mm
D600W-A49	Punch for 49 rings Coilbind	49	49' Coilbind	4mm
D600W-A59	Punch for 59 rings Coilbind	59	59' Coilbind	4mm

6. Dimensions



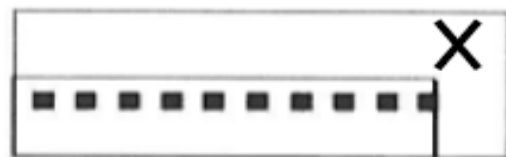
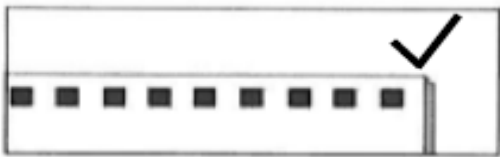
- Punching depth 2mm/4mm/6mm/8mm
- Net weight 22kg
- Voltage 110/220V 50/60Hz
- Punching capacity 25 sheets (70-80g) with all tools
Cardboard < 3mm per punch
PVC cover < 1mm per punch

7. Notes

- Read the instruction manual carefully and observe the following notes.
- Please check the sticker with the serial number, which is located on the back of the machine. In case it is missing or damaged, contact the distributor and ask for a replacement, as any warranty claims will not be accepted.
- The weight of the machine is 30kg. Be careful when using the machine and make sure it is on a sturdy table.
- Keep the machine away from any liquids and moisture.
- It is not allowed to punch hard materials, e.g., metal or similar. For PVC covers a maximum width of 1.0mm is allowed. Damage incurred by punching improper material is not covered by the warranty.
- The machine must be switched off for 20 minutes after 3 hours of non-stop use to prevent the motor from overheating.
- Before serial punching, test the punching depth and punching with a sample.
- Empty the waste drawer regularly to avoid jamming.
- Switch off the machine when not in use.
- In case of a defect, contact the distributor.

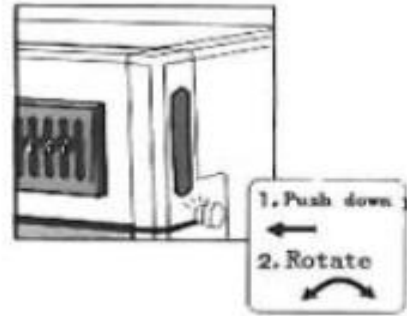
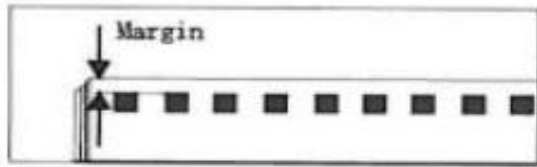
8. Use

- Before punching.
 1. Insert the required tool.
 2. Make sure the lock handle of the tool is closed.
 3. Have the sheet ready for punching.
 4. Adjust the paper fixer and avoid folding the sheet corners. The A4 format is marked on the paper fixer for orientation. Make sure the sheets lie flat on top of each other.



If the punching result corresponds to the picture on the right, deactivate the last die disengaging pin. Use a tool to punch 35 holes, deactivate the first die disengaging pin from the right to punch in A4 format.

5. Press the depth margin control down to select a punching depth of 2/4/6/8 mm (see picture).



6. Before starting to punch, test the punching process and the settings with a stack of sample sheets.

1. Insert the paper and adjust the paper fixer and the punching depth. Make sure not to punch too many sheets, otherwise the holes will be punched improperly.

2. In case of a defect, contact your distributor.

3. Press the foot pedal to start punching.

4. After punching, remove the sheets.

- Special paper size

1. Paper larger than A4 should be punched twice. Check the paper fixer and disengage the die disengaging pins if necessary.

2. For paper smaller than A4, make sure the corners are not folded and test the spacing of the die disengagement pins. Otherwise, problems may occur during the binding process.

- Binding

See the S600 instruction manual.

Troubleshooting

1. Foot pedal is pressed, but machine does not punch.

Check the power cable, the power switch, the operating lamp and the fuse.

2. The machine stops while punching.

Switch off the machine immediately. If the machine is under heavy-duty non-stop use for 3 hours, the motor may overheat and lacks enough power to punch. Let the machine cool down for 20 minutes. Please observe the further notes:

Disengage some die disengaging pins, press the foot pedal until the punching starting position. Then remove the paper and press the foot pedal again. The machine calibrates itself automatically and you can continue punching after the cooling phase.